



## Features

- Compact
- Lightweight
- Long life
- Infinite resolution
- Free shaft rotation
- AC or DC
- Shaft options available
- Flexible wire leads
- Economical
- RoHS compliant\*

## 3048 Linear Motion Potentiometer

### Specifications†

Standard Electrical Travel	0.2, 0.3, 0.4, 0.5 in. (5.08, 7.62, 10.16, 12.70 mm)
Standard Resistances	1K ohms to 50K ohms (± 20 %)
Independent Linearity	± 5 %
Resolution	Infinite
Power Rating @ 70 °C (158 °F)	
Range 2, 3	0.12 watt
Range 4, 5	0.25 watt
Operating Temperature Range	-55 °C to +125 °C
Temperature Coefficient	1000 PPM/°C
Insulation Resistance	50 megohms @ 500 VDC
Backlash	Negligible
Shaft Actuating Force	4 oz. max. @ 70 °F
Life	500,000 cycles
Shock	50 G for 7 msec
Vibration	20 G, 10-2 kHz
Marking	Manufacturer's trademark, resistance code, wiring diagram, date code, manufacturer's model number and style

Specifications are typical. Contact factory for special requirements.  
 † Specifications applicable from 5 % to 95 % of electrical travel.

### How to Order

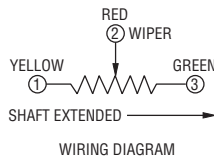
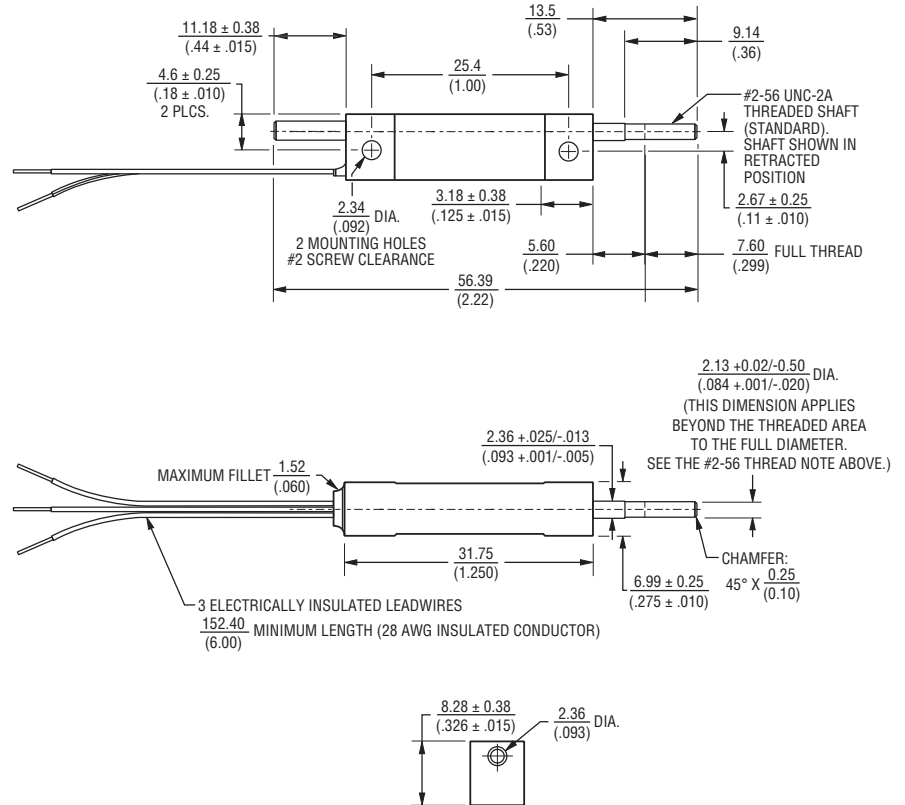
**3048 L - 2 - 502**

Model \_\_\_\_\_  
 Style \_\_\_\_\_  
 Range (Travel) \_\_\_\_\_  
 2 = 0.2" (5.08 mm)  
 3 = 0.3" (7.62 mm)  
 4 = 0.4" (10.16 mm)  
 5 = 0.5" (12.70 mm)  
 Resistance Value \_\_\_\_\_  
 Stainless steel shaft is available upon request.

### Standard Resistance Table

Resistance (Ohms)	Resistance Code
1,000	102
2,500	252
5,000	502
10,000	103
20,000	203
50,000	503

### Product Dimensions



TOLERANCES: ± .010 (0.25) EXCEPT WHERE NOTED

DIMENSIONS:  $\frac{\text{MM}}{\text{(INCHES)}}$